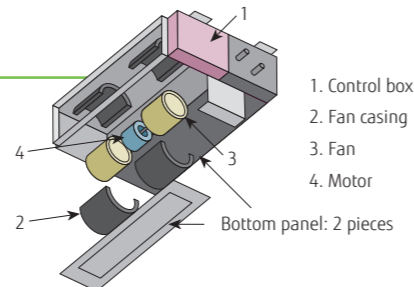


# Medium Static Pressure Duct Standard



## Easy maintenance

Structural improvement is attained by making the bottom panel in two pieces—front and rear. The internal fan casing is also manufactured in two pieces—upper and lower. As a result, the motor and fan can be easily accessed and maintained by removing the rear panel and the lower casing while leaving the main chassis in place.

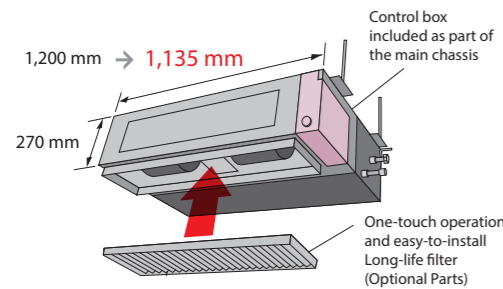


See below for case of rear-suction type

## Slim & Compact Design

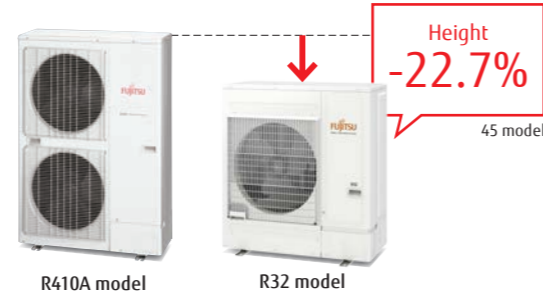
### Indoor Unit

The slim and compact design of the indoor unit, with the control box mounted on the side, allows installation in narrow spaces.

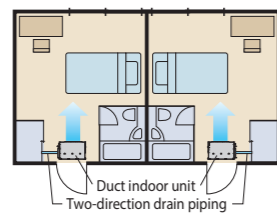


### Outdoor Unit

The outdoor units for the 45,000 BTU and 54,000 BTU models have been completely redesigned. Easier installation is achieved for this compact and lightweight outdoor unit.



## Two-direction drain piping

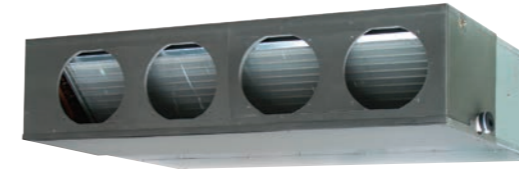


## Link up with a variety of Central Control System (Option)

Centralized control including facilities and equipment in addition to air conditioning is possible by linking up with MODBUS, KNX interfaces.



Model: ARXG22KMLB/ARXG24KMLA/ARXG30KMLA/ARXG36KMLA/ARXG45KMLA  
ARXG36KMLA [3-phase]/ARXG45KMLA [3-phase]



## Specifications

Model name	Indoor unit		ARXG22KMLB	ARXG24KMLA	ARXG30KMLA	ARXG36KMLA	ARXG45KMLA	ARXG36KMLA	ARXG45KMLA
	Outdoor unit		AOYG22KBTB	AOYG24KBTB	AOYG30KBTB	AOYG36KBTB	AOYG45KBTB	AOYG36KRTA	AOYG45KRTA
Power Source	Single phase, ~230 V, 50 Hz							3-phase, ~400 V, 50 Hz	
Capacity	Cooling	kW	6.0 (0.9-6.7)	6.8 (0.9-8.0)	8.5 (2.8-10.0)	9.5 (2.8-11.2)	12.1 (4.0-13.0)	9.5 (2.8-11.2)	12.1 (4.0-13.0)
	Heating		7.0 (0.9-8.0)	7.5 (0.9-9.1)	10.0 (2.7-11.2)	10.8 (2.7-12.7)	13.5 (4.2-15.2)	10.8 (2.7-12.7)	13.5 (4.2-15.2)
Input Power	Cooling/Heating	kW	1.78/1.87	2.14/1.97	2.65/2.63	2.97/2.88	4.22/3.84	2.97/2.88	4.22/3.84
	Cooling		3.37	3.18	3.21	3.20	2.87	3.20	2.87
EER	Cooling	W/W	3.74	3.80	3.80	3.75	3.52	3.75	3.52
	Heating		6.0/4.8	6.8/6.0	8.5/8.0	9.5/8.7	-	9.5/8.7	-
Pdesign	Cooling/Heating (-10°C)	kW	6.0/4.8	6.8/6.0	8.5/8.0	9.5/8.7	-	9.5/8.7	-
	Cooling		6.10	6.20	6.23	6.10	-	6.10	-
SEER	Cooling	W/W	4.10	4.10	4.00	4.00	-	4.00	-
	Heating		A++	A++	A++	A++	-	A++	-
Energy Efficiency Class	Cooling	A	12.6/12.6	13.6/13.6	22.6/22.6	22.6/22.6	28.5/28.5	10.5/10.5	14.0/14.0
	Heating		A+	A+	A+	A+	-	A+	-
Max. Operating Current	Cooling/Heating	A	12.6/12.6	13.6/13.6	22.6/22.6	22.6/22.6	28.5/28.5	10.5/10.5	14.0/14.0
	Cooling		344	384	477	545	-	545	-
Annual Energy Consumption	Cooling	kWh/a	1.637	2.045	2.797	3.044	-	3.044	-
	Heating		2.1	2.5	2.5	3.0	4.0	3.0	4.0
Moisture Removal	Indoor (Cooling)	H/M/L/Q	31/29/27/25	31/29/27/25	39/35/30/26	39/35/30/26	42/38/32/28	39/35/30/26	42/38/32/28
	Indoor (Heating)		31/29/27/25	31/29/27/25	42/35/30/26	42/35/30/26	42/38/32/28	42/35/30/26	42/38/32/28
Sound Pressure Level	Outdoor (Cooling/Heating)	dB(A)	51/51	53/54	53/55	55/55	57/57	55/55	57/57
	Indoor (Cooling/Heating)		High	60/62	60/62	65/69	65/70	68/70	65/70
Sound Power Level	Outdoor (Cooling/Heating)	High	63/63	65/66	68/69	70/70	71/71	70/70	71/71
	Indoor (Cooling/Heating)		High	1,100/2,240	1,100/2,700	1,900/3,750	1,900/3,750	2,100/4,450	1,900/3,750
Airflow Rate	Indoor/Outdoor (Cooling)	m³/h	1,100/1,960	1,100/2,700	2,100/3,750	2,100/3,750	2,100/4,450	2,100/3,750	2,100/4,450
	Indoor/Outdoor (Heating)		High	30 to 150 (35)	30 to 150 (35)	30 to 150 (47)	30 to 150 (47)	30 to 150 (60)	30-150 (47)
Static pressure range (Standard)	Indoor	Pa	270 × 1,135 × 700	270 × 1,135 × 700	270 × 1,135 × 700	270 × 1,135 × 700	270 × 1,135 × 700	270 × 1,135 × 700	270 × 1,135 × 700
	Outdoor		mm	632 × 799 × 290	716 × 820 × 315	788 × 940 × 320	788 × 940 × 320	998 × 940 × 320	788 × 940 × 320
Net Dimensions H x W x D	Indoor	mm	35 (77)	35 (77)	38 (84)	38 (84)	39 (86)	38 (84)	39 (86)
	Outdoor		kg (lbs)	38 (84)	42 (93)	52 (115)	52 (115)	67 (148)	53 (117)
Weight	Indoor	kg (lbs)	6.35/12.70	6.35/12.70	9.52/15.88	9.52/15.88	9.52/15.88	9.52/15.88	9.52/15.88
	Outdoor		mm	35.7/38.1	35.7/38.1	35.7/38.1	35.7/38.1	35.7/38.1	35.7/38.1
Connection Pipe Diameter (Liquid/Gas)	Indoor/Outdoor (Cooling)	m	30 (20)	30 (20)	50 (30)	50 (30)	50 (30)	50 (30)	50 (30)
	Max. Height Difference		25	25	30	30	30	30	30
Operating Range	Cooling	°CDB	-15 to 46	-15 to 46	-15 to 46	-15 to 46	-15 to 46	-15 to 46	-15 to 46
	Heating		-15 to 24	-15 to 24	-15 to 24	-15 to 24	-15 to 24	-15 to 24	-15 to 24
Refrigerant	Type (Global Warming Potential)	kg (CO2eq-T)	R32 (675)	R32 (675)	R32 (675)	R32 (675)	R32 (675)	R32 (675)	R32 (675)
	Charge		1.25 (0.844)	1.25 (0.844)	1.90 (1.283)	1.90 (1.283)	2.70 (1.823)	1.90 (1.283)	2.70 (1.823)

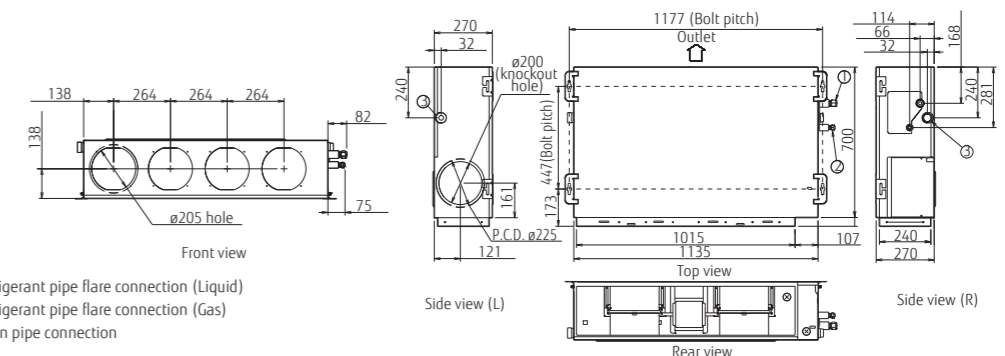
## Optional parts

\* For optional parts compatibility of Intesis devices, refer to the optional parts compatibility list Page C-046.

Compact wired remote controller:	UTY-RCRYZ1	External switch controller:	UTY-TERX	Network Converter for single split (DC power supply type):	UTY-VTGX
Wired remote controller (touch panel):	UTY-RNRYZ5	WLAN adapter:	UTY-TFSXZ1	Network Converter for single split (AC power supply type):	UTY-VTGXV
Wired remote controller:	UTY-RLRY		FJ-RC-WIFI-1	Drain pump unit:	UTZ-PXINBA
	UTY-RNNYM	Flange (Round):	UTD-RF204	Long-life filter:	UTD-LF25NA
	UTY-RVNYM	Flange (Square):	UTD-SF045T	Silver Ion Filter:	UTD-HFND
Simple remote controller (without operation mode):	UTY-RHRY	IR receiver unit:	UTY-LBTYM		
Simple remote controller:	UTY-RSRY	Remote sensor unit:	UTY-XSZX	(Outdoor unit 30/36/45/54)	
	UTY-RSNYM	External connect kit:	UTY-XWZXZG	External connect kit:	UTY-XWZXZ3

## Dimensions

(Unit: mm)



- ① Refrigerant pipe flare connection (Liquid)
- ② Refrigerant pipe flare connection (Gas)
- ③ Drain pipe connection